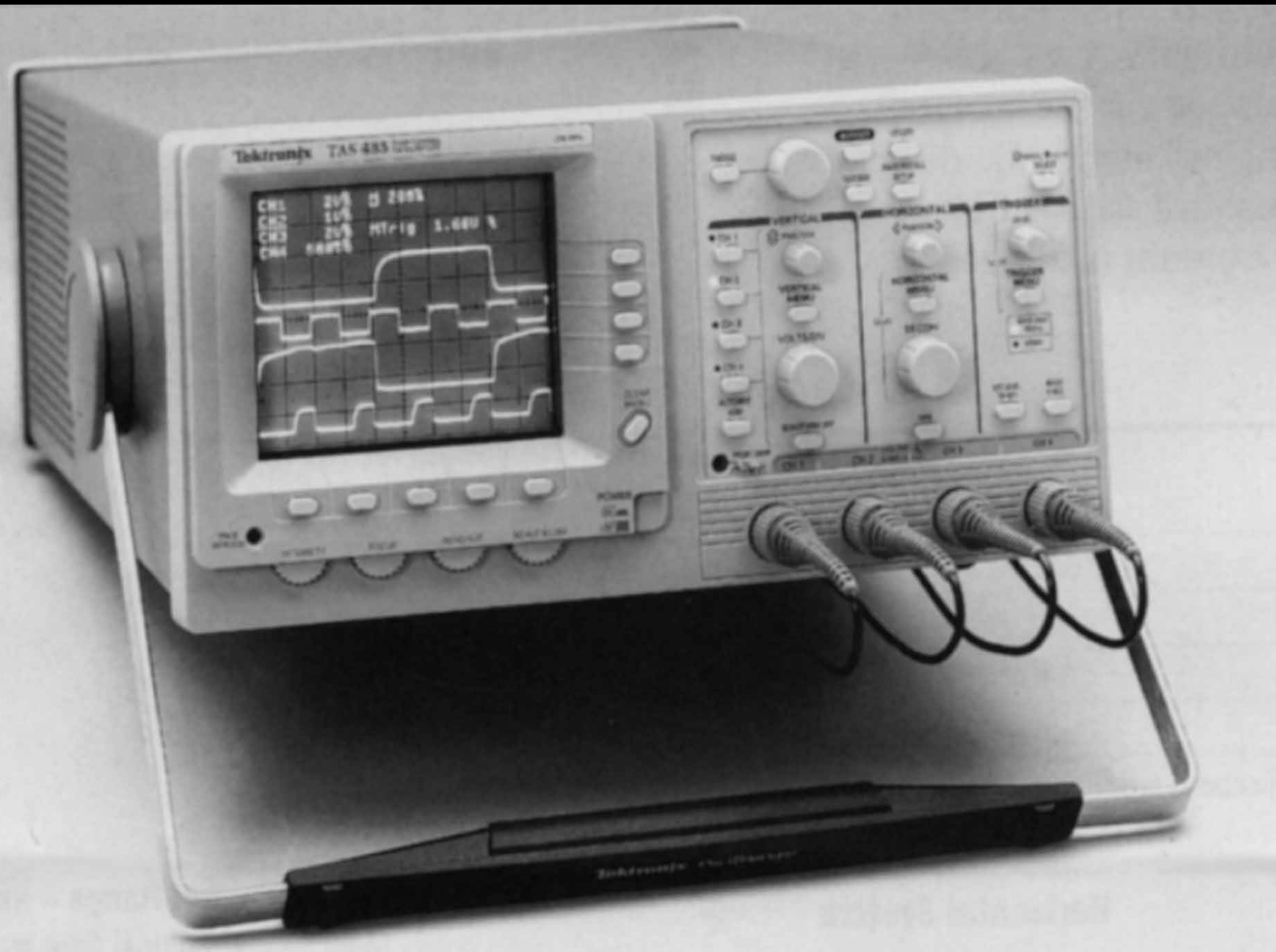


Digital multimeter

- High input impedance for voltage measurements
- Low input impedance for current measurements
- DC or AC
- Can measure resistance
- Some can measure capacitance, read thermocouples, ...
- Accuracy $<1\%$ of reading
- Not working? Check leads, battery, and fuse!

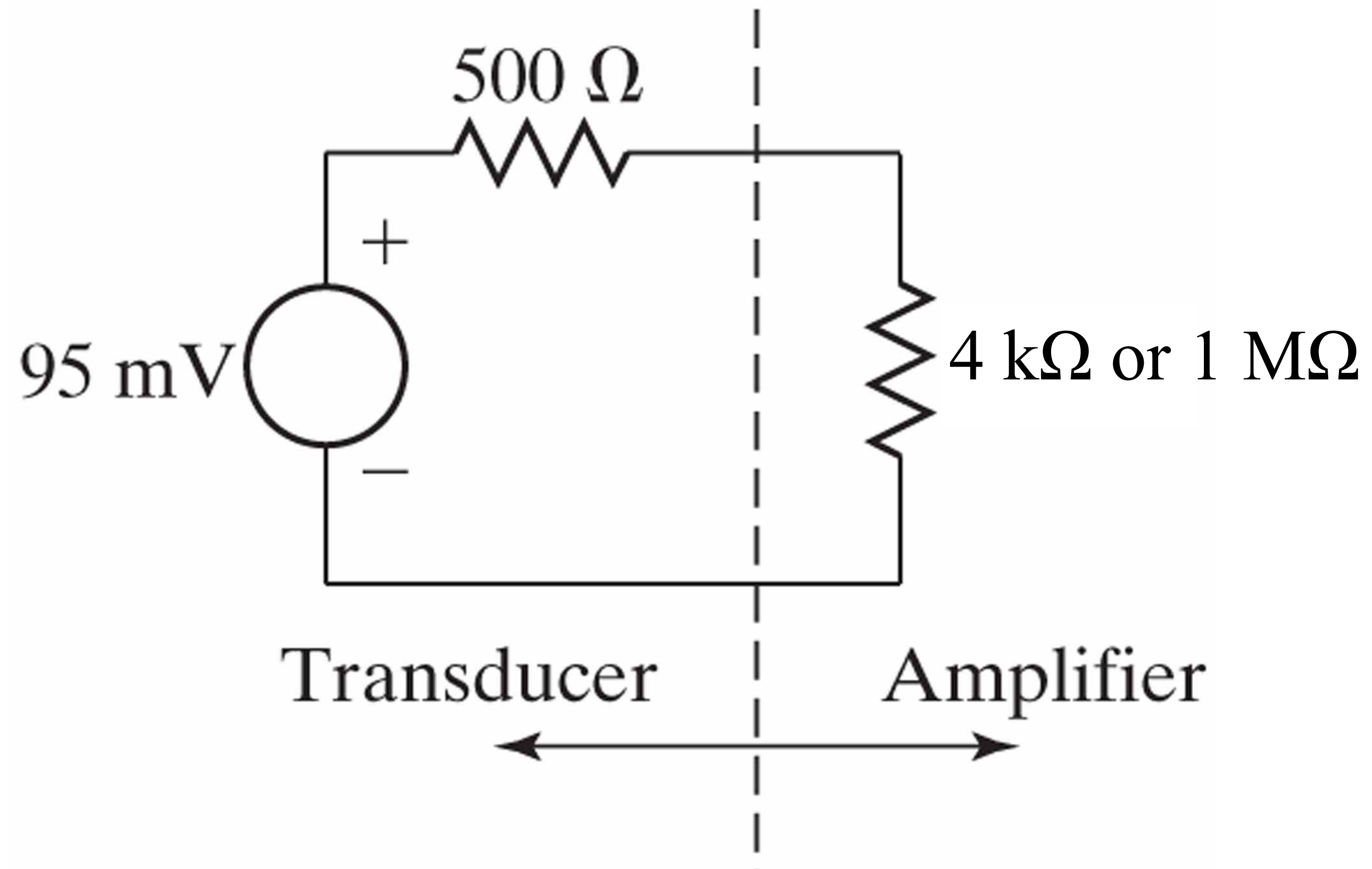


Oscilloscope



- For measuring time-varying voltages, typically periodic
- High input impedance
- Accuracy $<1\%$ of reading
- Multiple channels
- Up to 100 MHz
- Usually USB output

Ex. 3.1: A force-measuring transducer has an open-circuit output voltage of 95 mV and an output impedance of 500 Ω . To amplify the signal voltage, it is connected to an amplifier with a gain of 10. Estimate the input loading error if the amplifier has an input impedance of (a) 4 k Ω , or (b) 1 M Ω .



UA741CP



Images are for reference only
See Product Specifications



Share

Mouser #: 595-UA741CP

Mfr. #: UA741CP

Mfr.: [Texas Instruments](#)

Customer #:

Description: Operational Amplifiers - Op Amps GP Op Amp

Datasheet: [UA741CP Datasheet](#)

ECAD Model:



PCB Symbol, Footprint
& 3D Model

Download the free [Library Loader](#) to convert this file for your ECAD Tool. [Learn more about ECAD Model.](#)

Compare Product

[Add To Project](#) | [Add Notes](#)